

#57303

FOR SALE



Limassol, Linopetra

127 m² Covered | 3 Bedrooms | 2 Bathrooms



Description

For sale off plan, this modern penthouse apartment offers 127 m² of internal space, 50 m² of covered veranda and 110 m² of roof garden, designed with comfort and style in mind. Located in the highly sought-after area of Linopetra, this property features three spacious bedrooms and two contemporary bathrooms, perfect for families or professionals who value quality living.

The penthouse enjoys private elevator access, providing ease and convenience. It is set within a secure, gated complex with a large communal swimming pool, ideal for relaxing and socializing. Built to the highest standards of energy efficiency (Class A), the apartment includes a central AC system to ensure year-round comfort. Floor-to-ceiling windows create a bright and airy atmosphere throughout the clean, modern interiors.

Linopetra is known for its peaceful residential environment, excellent

€1,600,000 +VAT

TYPE	Apartment
BEDROOMS	3
BATHROOMS	2
COVERED	127 m ²
STATUS	Off plan
YEAR OF CONSTRUCTION	2027



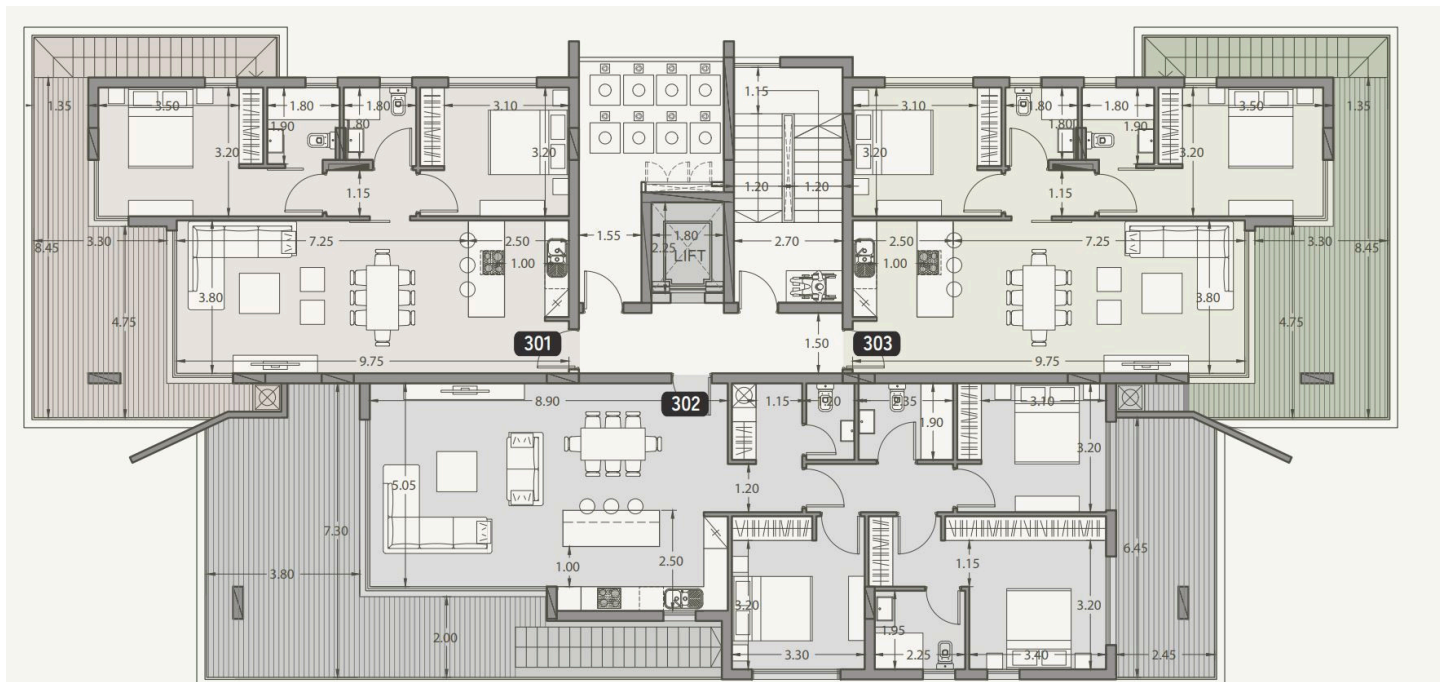
Limassol Office Office Administrator

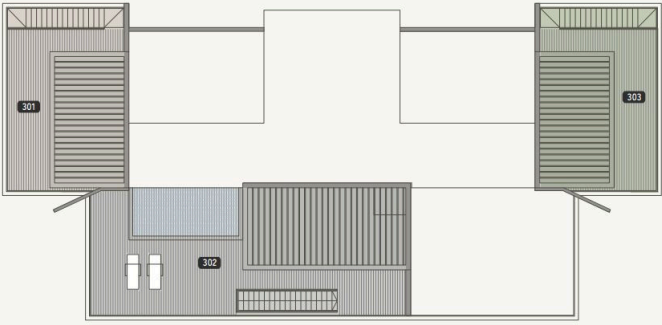
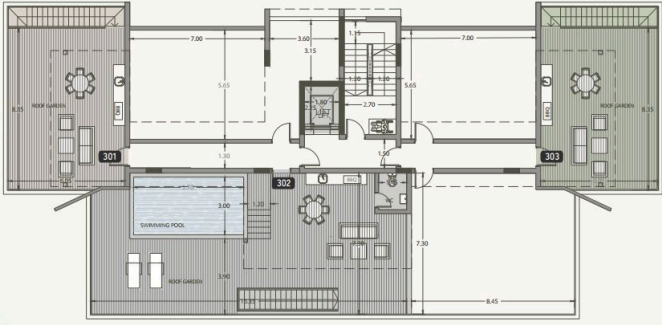
(+357) 97766062

limassol@nchrealestate.com



nchrealestate.com





	TOTAL AREA m²
301	50
302	110
303	50