

#56648

FOR SALE



Limassol, Palodeia

143 m² Covered | 4 Bedrooms | 3 Bathrooms



Description

€890,000 ^{+VAT}

This modern off-plan house offers the perfect blend of style and comfort in the peaceful area of Palodeia. Designed with contemporary living in mind, the property features a generous internal space of 143m² in a plot of 336m², and basement of 67m². There are four spacious bedrooms and two bathrooms, providing plenty of room for family life or entertaining guests.

The large plot offers ample outdoor space for gardening or relaxing, while an on-site gym adds convenience for your fitness needs. With an energy efficiency rating of A+, you can enjoy a comfortable home that is also environmentally friendly and cost-effective.

TYPE	House
BEDROOMS	4
BATHROOMS	3
COVERED	143 m ²
PLOT	336 m ²
STATUS	Off plan
YEAR OF CONSTRUCTION	2027



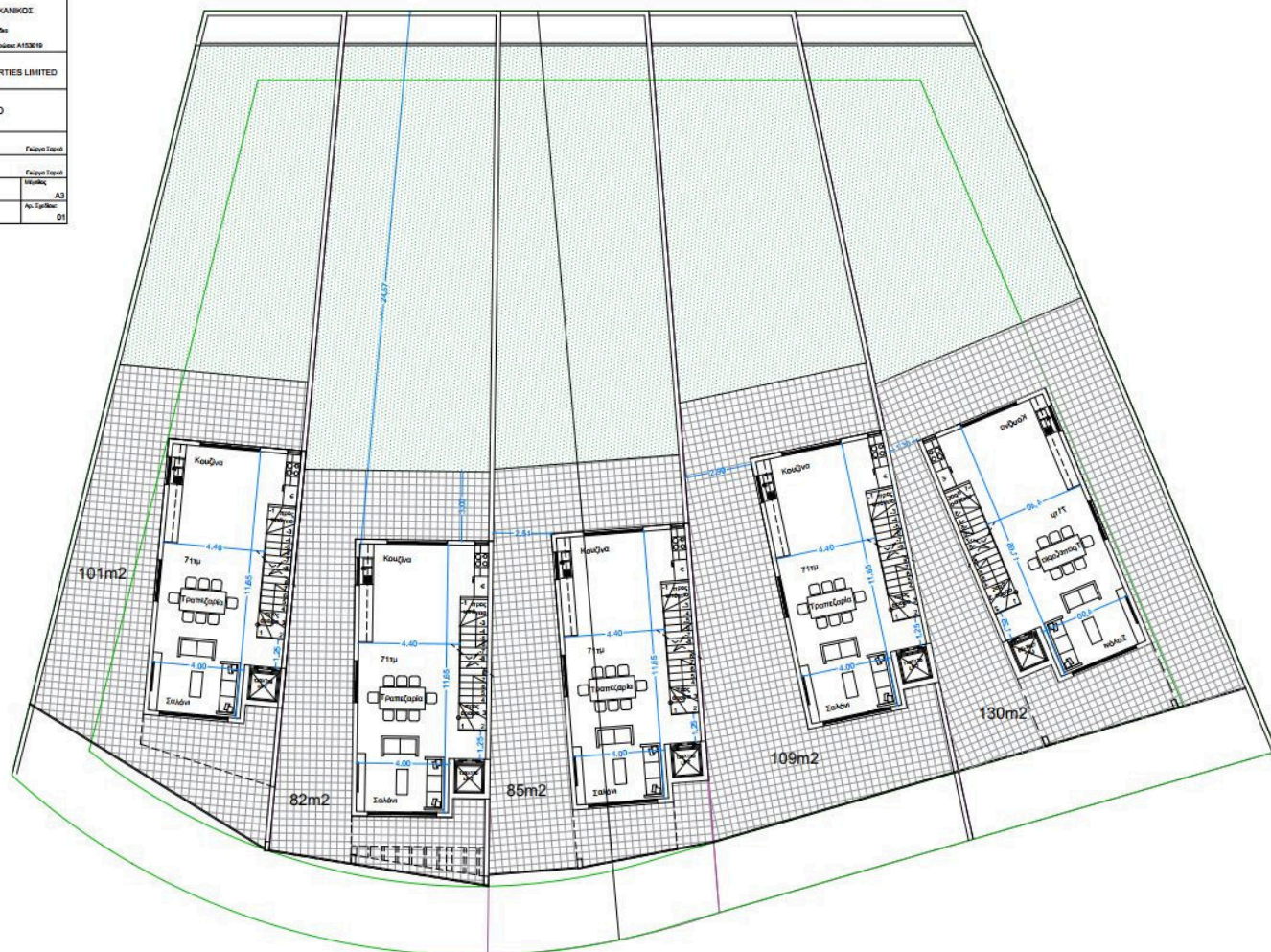
Limassol Office Office Administrator

(+357) 97766062

limassol@nchrealestate.com



nchrealestate.com



ΑΡΧΙΤΕΚΤΟΝΙΚΕΣ ΜΗΧΑΝΙΚΕΣ	
Αντώνης Πουλιόπουλος, Πειραιάς 40404, Γαλαξίας Τηλ: 99750321 Αλ.Μετσοβίου Α153019	
BELZEKO PROPERTIES LIMITED	
Στοιχ.	
ΟΡΟΦΟΣ	
Αντικείμενο/αριθμός	Προσαν. Στοιχ.
Επίπεδο	Προσαν. Στοιχ.
Κλίμακας	Μετρώδης
1:100	A3
Ημερομηνία	Αρ. Σελίδας
	01

