

#56543

FOR SALE



Limassol, Pano Polemidia

3645 m² Covered



Description

For sale: Modern commercial building, off plan, offering a generous internal space of 3,645 square meters. This future development comes with a flexible layout ideal for various business needs, from offices and retail to mixed-use enterprises. Thoughtfully designed, the building will feature an underground basement, perfect for storage or additional amenities.

The property sits on a large plot, allowing for ample parking or landscaping options. An elevator will ensure easy movement across all floors, enhancing accessibility for staff and visitors alike. With its proximity to the highway, your business will benefit from excellent connectivity and convenient transportation links.

Nearby amenities make it a practical choice for both employees and clients. The building also boasts beautiful mountain views, providing a remarkable backdrop and a pleasant atmosphere. Opportunities like this

€13,000,000 +VAT

TYPE	Commercial Building
COVERED	3645 m ²
PLOT	3327 m ²
STATUS	Off plan



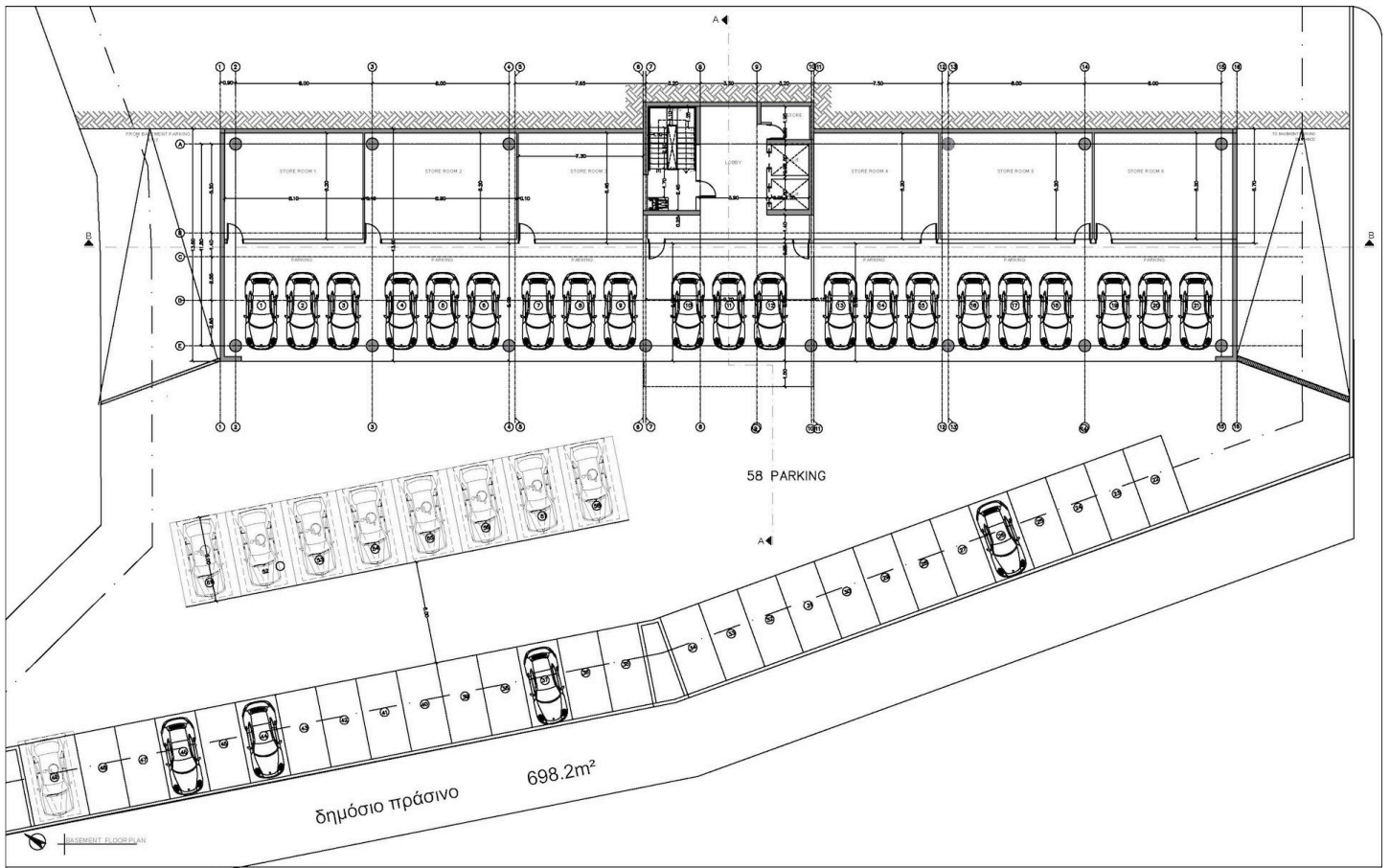
Alexandru Bejinariu Agent


(+357) 97766062

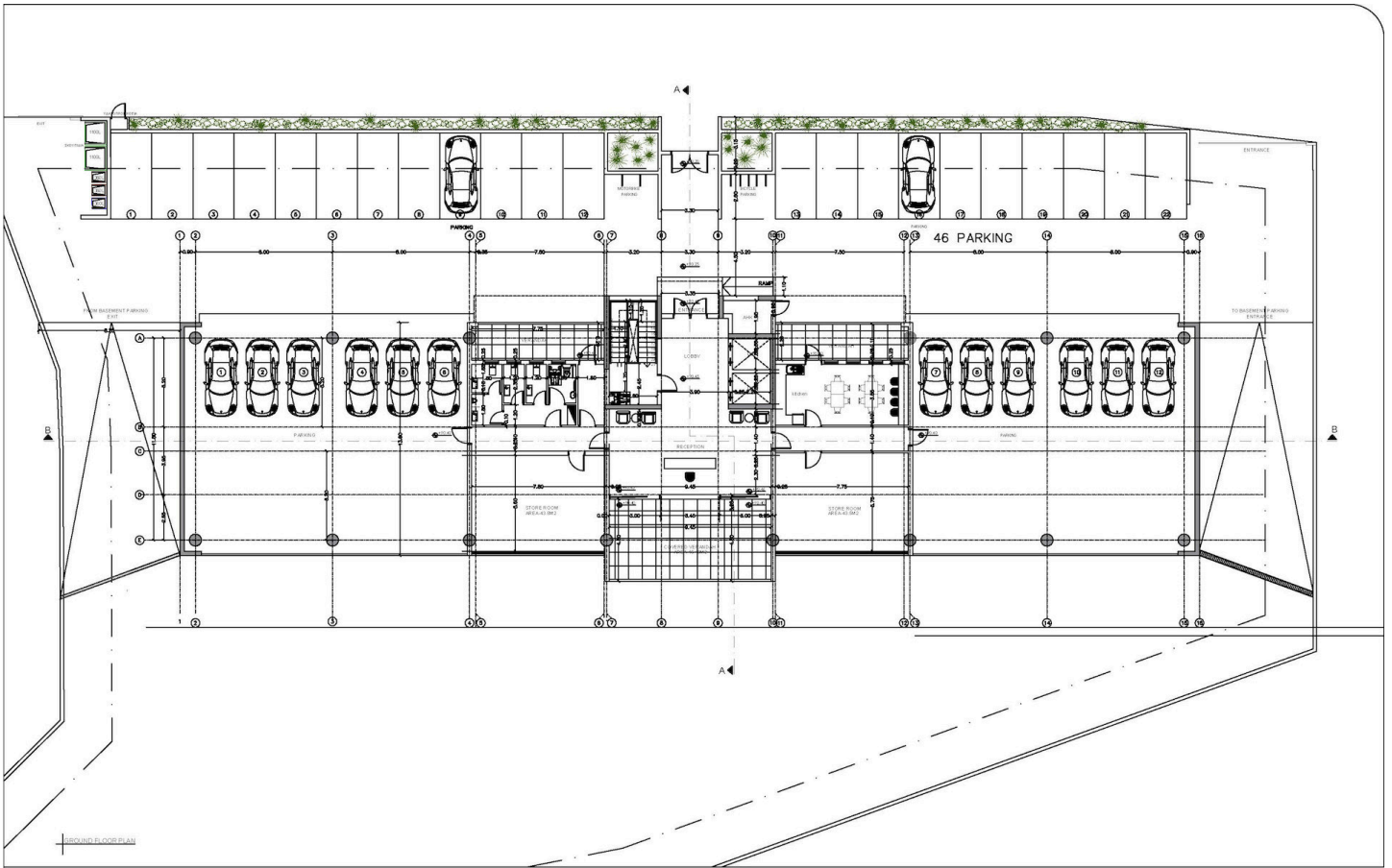
alex@nchrealestate.com



nchrealestate.com



 <p>Christoforos C. Stylianides & Partners</p> <p>ARCHITECTS ENGINEERS CONSULTANTS</p> <p>38 Σπυριδίου Κιπριανίου Avenue / CCS BLDG, Suite 301, 4154 Limassol - Cyprus Tel : 25 73 51 31 - Fax : 25 38 97 55 / Email : chr.stylianides@cytanet.com.cy</p>	<p>Project No. A2020-11-970</p> <p>Site: Epitaxi</p>	<p>Signature: _____ Engineer</p> <p>CCS STYLIANIDES SERVICES LTD Christoforos C. Stylianides ΕΠΙΧ. ΑΡ. 96 7802 / Αρμόδιος ΑΡΧΙΤΕΚΤΟΝΙΚΟ ΠΡΟΓΡΑΜΜΑ</p>	<p>Client: ELMODORA HOLDINGS LTD & ΚΑ ΣΤΟΚΚΑ ΤΖΕΝΗ</p> <p>Signature: _____</p>	<p>Date: 05/2024</p>	<p>Project: RIVER SIDE BLDG</p> <p>Draw Title: PROXEDIA BASEMENT FLOOR PLAN</p> <p>Location: POLEMIDIA - LIMASSOL</p>	<p>DWG No. Αρ. 01</p> <p>Scale: 1:100</p>
	<p>BASEMENT FLOOR PLAN</p>					



**Christoforos C. Stylianides
& Partners**

- ARCHITECTS
- ENGINEERS
- CONSULTANTS

38 Σπυριδίου Κιπριανίου Αvenue / CCS BLDG, Suite 301, 4154 Limassol - Cyprus
Tel : 25 73 51 31 - Fax: 25 38 97 55 / Email: chr.stylianides@cytanet.com.cy

Project No.
A2020-11-970

Signature
Engineer

**CCS STYLIANIDES
SERVICES LTD**
Christoforos C. Stylianides
459 Ave. 96 7802 / Limassol
8040023-000000-00000001

Client
ELMODORA HOLDINGS LTD & Κα ΣΤΟΚΚΑ ΤΖΕΝΗ

Signature

Date
05
2024

Project
RIVER SIDE BLDG

Draw Title
PROXEDIA
GROUND FLOOR PLAN

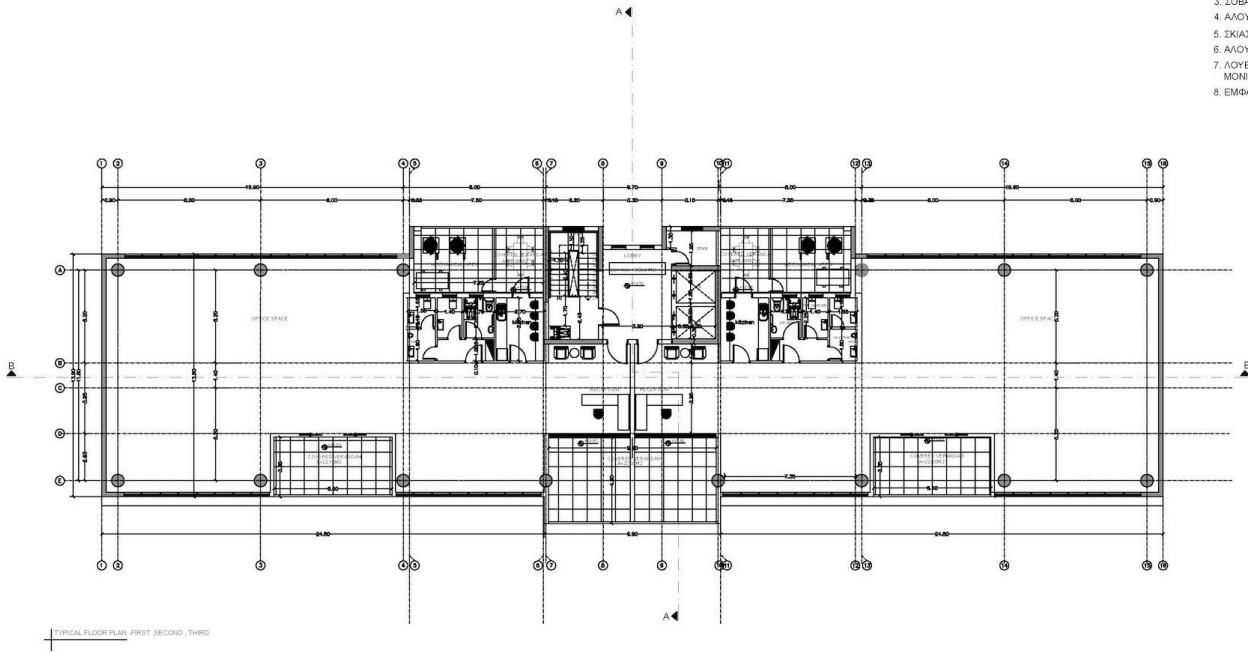
Location
POLEMIDIA - LIMASSOL

DWG No.
Ap. 02

Scale - in/mm
1:100

ΥΠΟΜΝΗΜΑ ΥΛΙΚΩΝ

1. ALUCOBOND
2. ΚΙΓΚΛΙΔΩΜΑ ΑΠΟ ΓΥΑΛΙ
3. ΣΟΒΑΣ - ΤΕΛΙΚΟ ΕΠΙΧΡΙΣΜΑ / ΜΠΟΓΙΑ
4. ΑΛΟΥΜΙΝΙΟ ΠΑΡΑΒΥΡΟ + ΓΥΑΛΙ
5. ΣΚΙΑΣΤΡΑ ΑΛΟΥΜΙΝΙΟΥ
6. ΑΛΟΥΜΙΝΙΟ ΠΟΡΤΕΣ
7. ΛΟΥΒΡΑ ΑΛΟΥΜΙΝΙΟΥ - ΜΟΝΩΣ ΕΞΑΕΡΙΣΜΟΣ
8. ΕΜΦΑΝΙΣ ΣΥΡΩΔΕΜΑ (FAIR FACE)



**Christoforos C. Stylianides
& Partners**

- ARCHITECTS
- ENGINEERS
- CONSULTANTS

38 Σπυριου Κιπριανου Avenue / CCS BLDG, Suite 301, 4154 Limassol - Cyprus
Tel : 2532 51 31 - Fax : 2538 97 55 / Email : chr.stylianides@optanet.com.cy

Project No.
A2020-11-970

Signature
Engineer

**CCS STYLIANIDES
SERVICES LTD**
Christoforos C. Stylianides
459 Ave. 96 2102 - Limassol
9049021-000000-00000001

Owner
ELMODORA HOLDINGS LTD & Κα ΣΤΟΚΚΑ ΤΖΕΝΗ

Signature

Date
05
2024

Project
RIVER SIDE BLDG

Draw Title
PROSXEDIA
TYPICAL FLOOR PLAN-1st,2nd,3rd

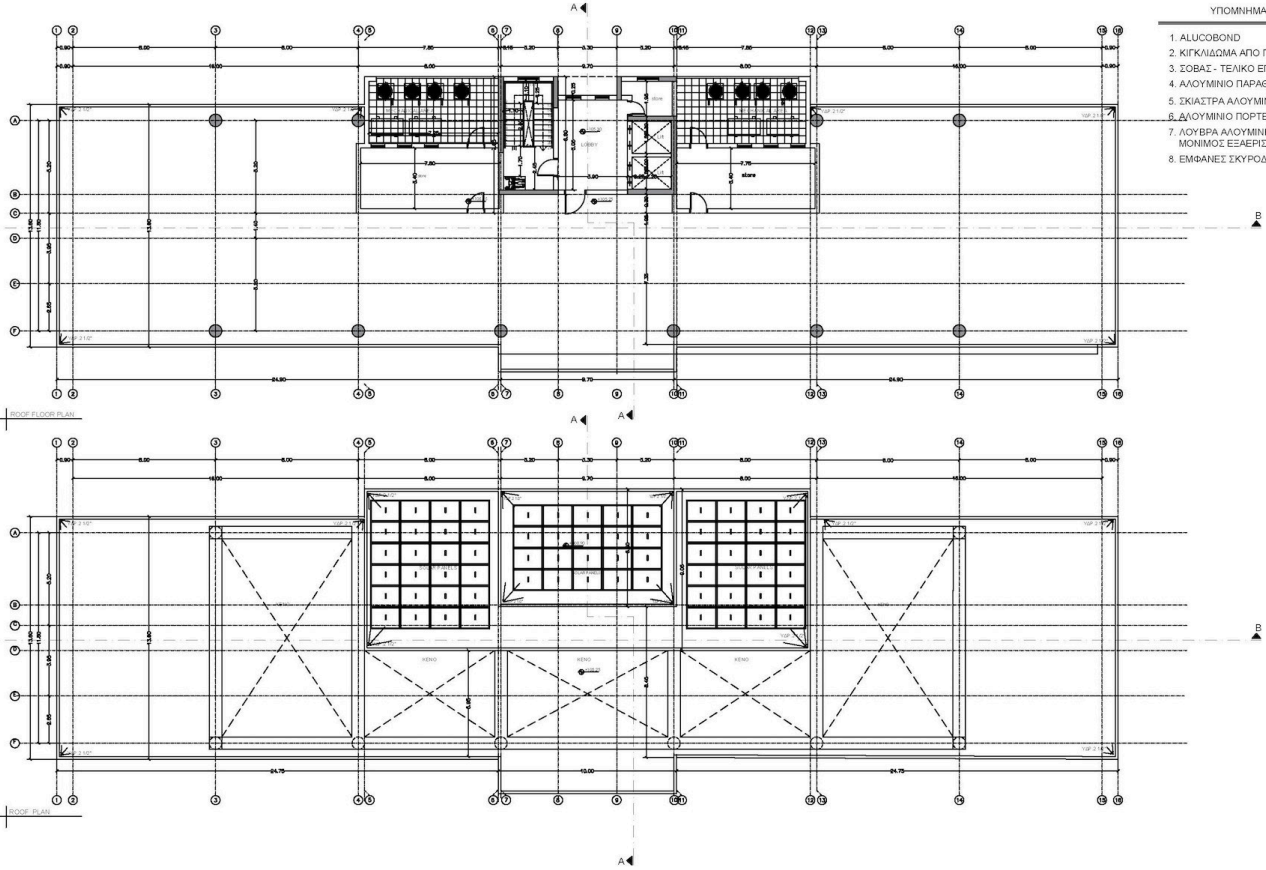
Location
POLEMIDIA - LIMASSOL

DWG No.
Ap. 03

Scale - Μέγεθος
1:100

ΥΠΟΜΗΝΗΜΑ ΥΛΙΚΩΝ

1. ALUCOBOND
2. ΚΙΓΚΛΙΔΩΜΑ ΑΠΟ ΓΥΑΛΙ
3. ΣΟΒΑΣ - ΤΕΛΙΚΟ ΕΠΙΧΡΙΣΜΑ / ΜΠΟΓΙΑ
4. ΑΛΟΥΜΙΝΙΟ ΠΑΡΑΒΥΡΟ + ΓΥΑΛΙ
5. ΣΚΙΑΣΤΡΑ ΑΛΟΥΜΙΝΙΟΥ
6. ΑΛΟΥΜΙΝΙΟ ΠΟΡΤΕΣ
7. ΛΟΥΒΡΑ ΑΛΟΥΜΙΝΙΟΥ - ΜΟΝΗΚΟΣ ΕΣΑΕΡΙΣΜΟΣ
8. ΕΜΦΑΝΣΗ ΣΚΥΡΩΜΑΤΟΣ (FAIR FACE)



**Christoforos C. Stylianides
& Partners**

- ARCHITECTS
- ENGINEERS
- CONSULTANTS

38 Σπυριδίου Κιπριανίου Avenue / CCS BLDG, Suite 301, 4154 Limassol - Cyprus
Tel : 25 73 51 31 - Fax : 25 38 97 55 / Email : chr.stylianides@cytanet.com.cy

Project No.
A2020-11-970

Signature

Engineer

CCS STYLIANIDES
SERVICES LTD
Christoforos C. Stylianides
459 Ave. 96 7802 - Limassol
8040023-0000000-00000000

Owner

ELMODORA HOLDINGS LTD & Κα ΣΤΟΚΚΑ ΤΖΕΝΗ

Signature

Date

05

2024

Project

RIVER SIDE BLDG

Draw Title

PROXEDIA
ROOF FLOOR PLAN

Location

LIMASSOL

DWG No.

Ap. 04

Scale - μέτρο

1:100