

#54761

FOR SALE



## Limassol, Limassol - City Center

382 m<sup>2</sup> Covered

### Description

An iconic 8-story Class A business center, conveniently located in one of Limassol's most sought-after business areas, located in the City Center, features 14 modern offices, 2 retail shops, and ample parking spaces.

The development serves as a dynamic, up-and-coming business infrastructure, making it an ideal choice for investors or businesses looking to establish their offices and enjoy ease and functionality at a premium location.

This luxury office space has an internal covered area of 382m<sup>2</sup> and covered veranda of 120m<sup>2</sup>.

**€3,550,000** +VAT

<b>TYPE</b>	Office
<b>COVERED</b>	382 m <sup>2</sup>
<b>STATUS</b>	Off plan



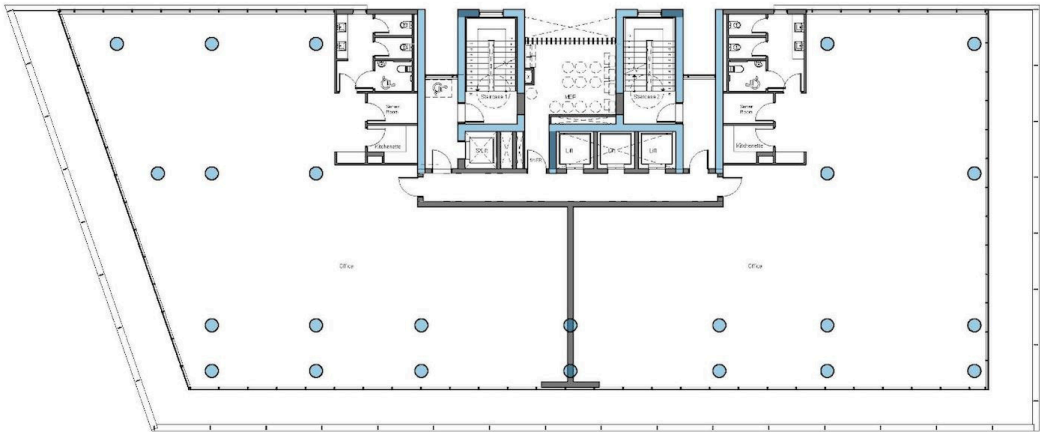
### Andreas Kypreos Real Estate Agent

(+357) 97766062

andreas@nchrealestate.com



nchrealestate.com



<u>UNIT NO.</u>	<b>A201</b> 513.90 m <sup>2</sup> total area	<b>A301</b> 513.90 m <sup>2</sup> total area	<b>A401</b> 513.90 m <sup>2</sup> total area	<u>UNIT NO.</u>	<b>A601</b> 513.90 m <sup>2</sup> total area	<b>A701</b> 513.90 m <sup>2</sup> total area	<b>A801</b> 513.90 m <sup>2</sup> total area
	<b>A202</b> 486.50 m <sup>2</sup> total area	<b>A302</b> 486.50 m <sup>2</sup> total area	<b>A402</b> 486.50 m <sup>2</sup> total area		<b>A602</b> 486.50 m <sup>2</sup> total area	<b>A702</b> 486.50 m <sup>2</sup> total area	<b>A802</b> 486.50 m <sup>2</sup> total area

