

#54569

FOR SALE



Limassol, Kato Polemidia

742 m² Covered

Description

Discover unparalleled luxury in the heart of Limassol's city center and elevate your business presence with these exquisite offices located near the highway and all business amenities.

Spanning four floors, these meticulously designed spaces offer sophistication and prestige, ideal for discerning professionals.

The building has a total internal covered area of 742m², 115m² of covered verandas and a roof terrace of 137m².

€6,150,000 +VAT

TYPE	Commercial Building
COVERED	742 m ²
STATUS	Off plan



Charis Karayiannis Real Estate Agent

(+357) 97766062

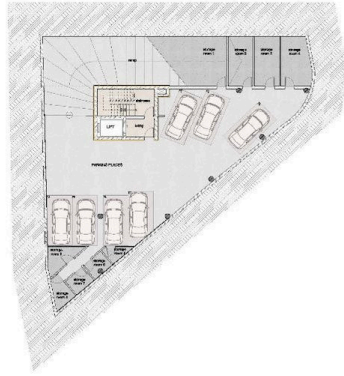
charis@nchrealestate.com



nchrealestate.com

Architectural Plans

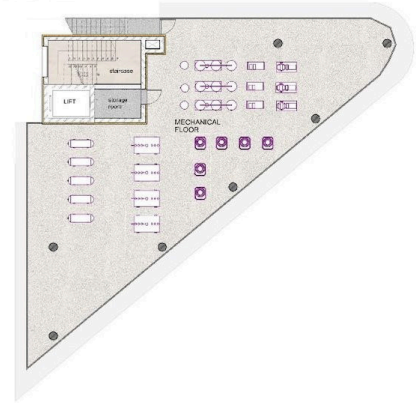
BASEMENT



GROUND FLOOR



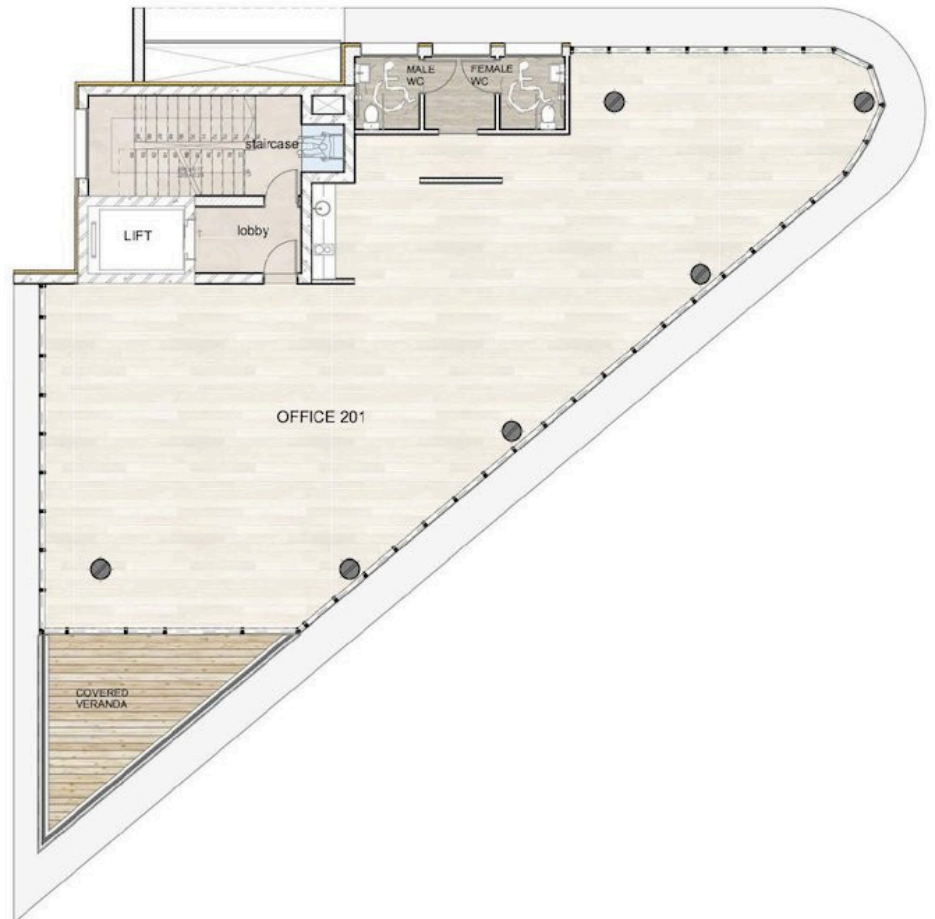
MECHANICAL



1ST FLOOR



2ND FLOOR



3RD FLOOR



4th FLOOR



ROOF GARDEN

