

#54007

FOR SALE



Limassol, Palodeia

134 m² Covered | 3 Bedrooms |



Description

€365,000 +VAT

Three bedroom semi-detached houses for sale in Palodeia, Limassol

Project consists of 2 semi-detached houses in 620 m² of plot.

Each house has 3 levels:

- basement level for parking and warehouse area, including shower/toilet/laundry room
- ground floor level with open plan living room connected with kitchen and w/c. Also big entrance veranda and kitchen veranda.
- 1st floor with 3 bedrooms, toilet/shower and en suite toilet shower in master bedroom. Also each bedroom has covered verandas 6 m² each.

All areas will include provisions for air-conditioning.

Each house has an internal area of 134 m² and 65 m² basement.

TYPE	House
BEDROOMS	3
COVERED	134 m ²
PLOT	310 m ²
STATUS	Off plan



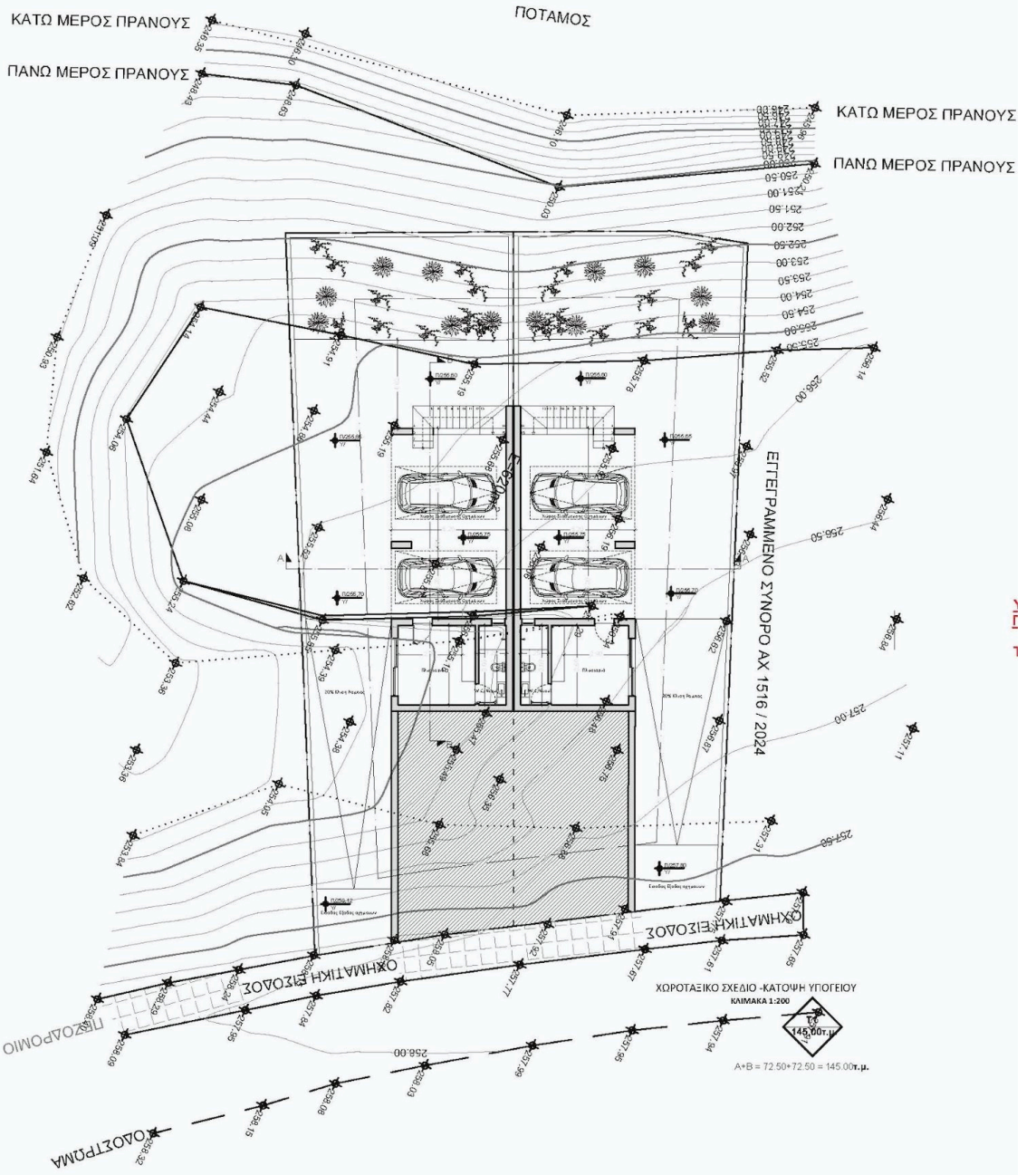
Charis Karayiannis Real Estate Agent

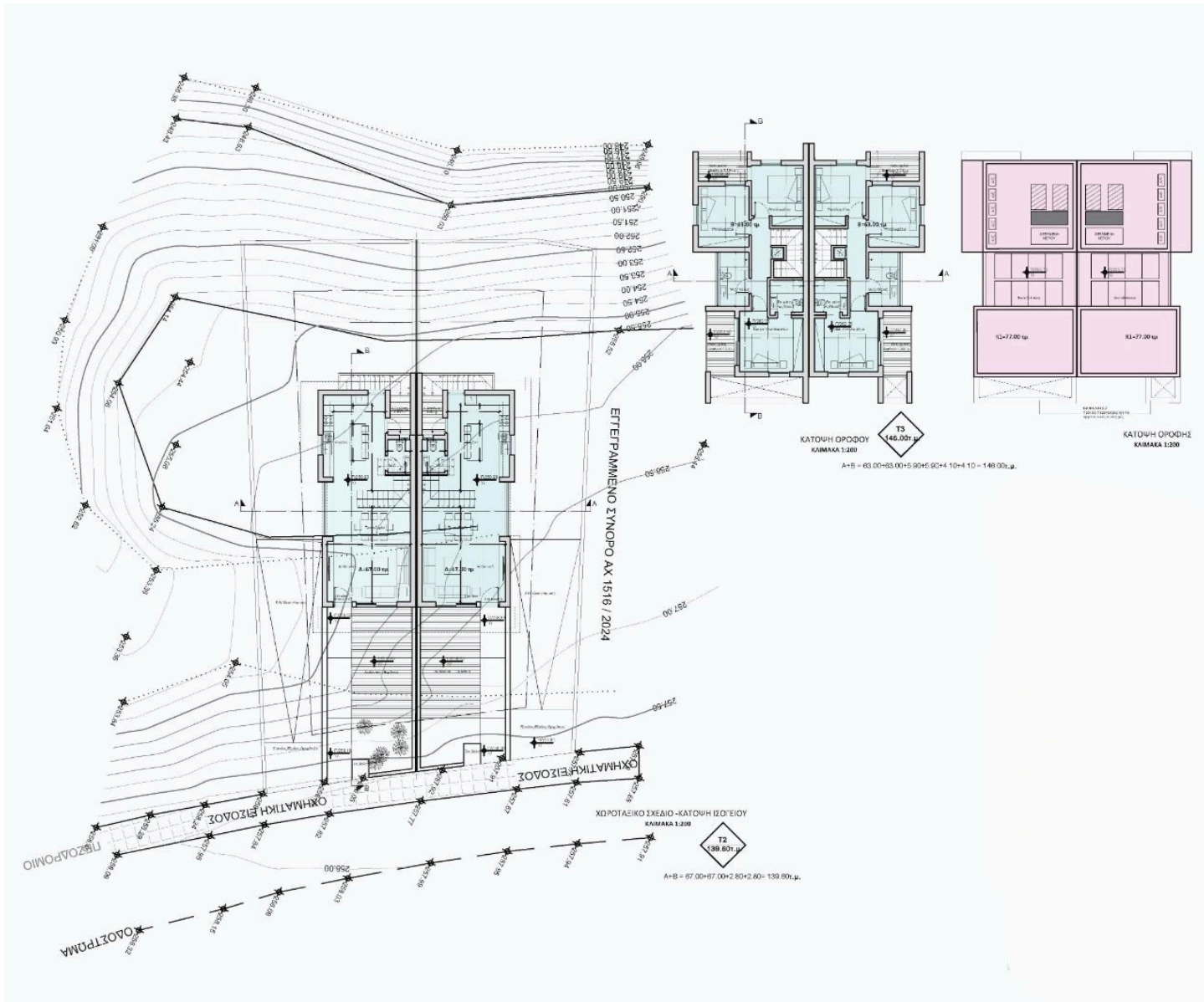
(+357) 97766062

charis@nchrealestate.com



nchrealestate.com





ΕΠΕΡΠΑΜΜΕΝΟ ΣΥΝΟΡΟ ΑΧ 1516 / 2024

ΟΧΗΜΑΤΙΚΗ ΕΙΣΟΔΟΣ

ΧΡΟΤΑΙΡΙΚΟ-ΚΑΤΟΥΗ ΕΙΣΟΔΟΣ

ΛΙΣΟΔΡΟΜΙΟ
ΟΔΟΣ ΠΡΩΜΑ

ΚΑΤΟΥΗ ΟΡΟΦΟΥ
ΚΑΜΑΚΑ 1:200
T3
146.00μ²
A-B = 63.00+53.00+5.90+4.10+4.10 = 140.00μ.

ΚΑΤΟΥΗ ΟΡΟΦΗΣ
ΚΑΜΑΚΑ 1:200
T2
139.60μ²
A-B = 87.00+87.00+2.80+2.80 = 139.60μ.