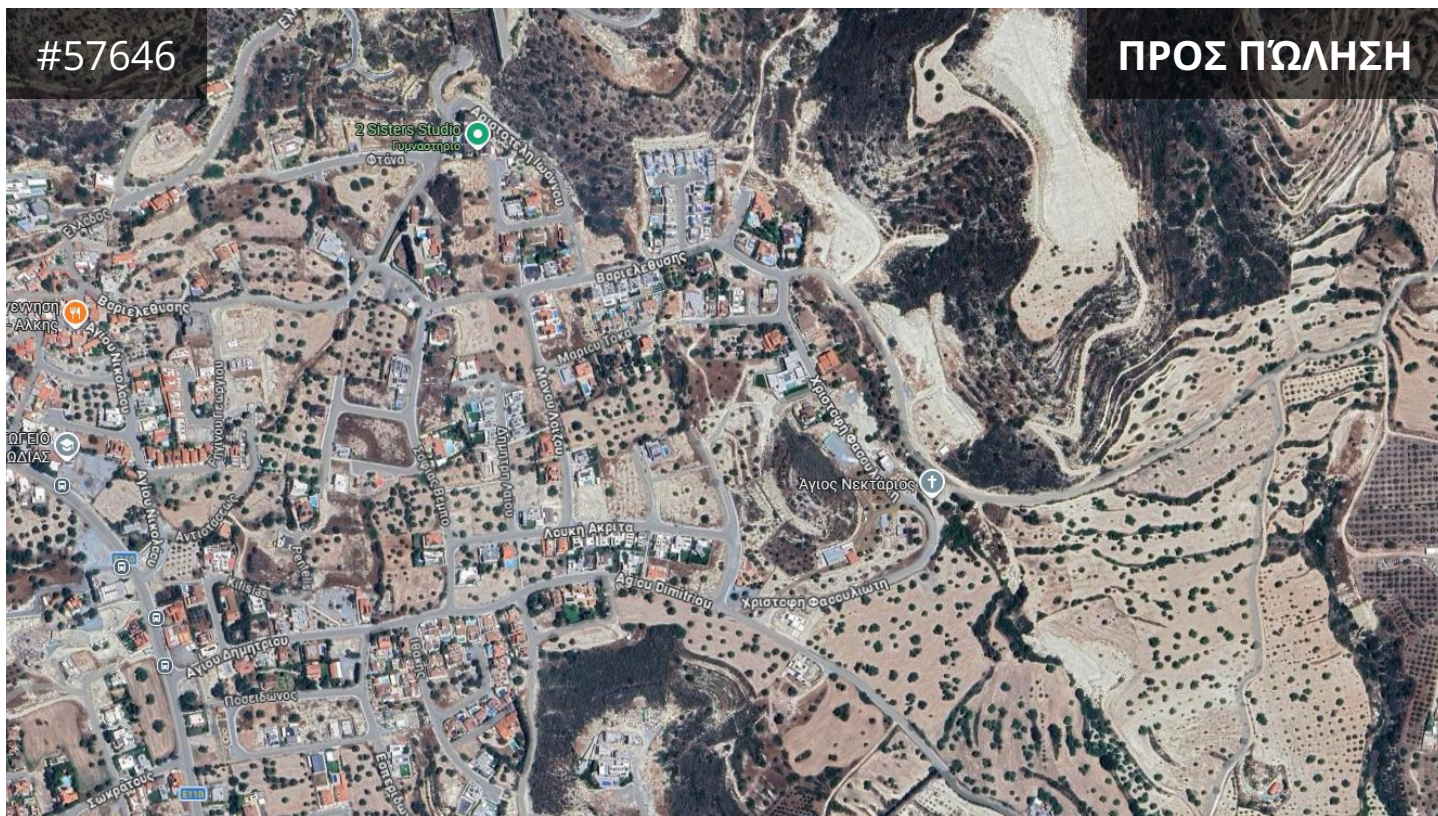


#57646

ΠΡΟΣ ΠΩΛΗΣΗ



Limassol, Palodeia

833 m² Εμβαδόν

Περιγραφή

€170,000 +ΦΠΑ

For sale: Development land in the desirable area of Palodeia. This large plot measures 833 m², offering plenty of space for building your dream home or an investment project. Palodeia is a peaceful and established neighborhood, well known for its scenic views and calm atmosphere. Residents benefit from a blend of countryside charm and modern conveniences, with easy access to schools, shops, and other amenities.

The plot itself is spacious and versatile, giving you the freedom to design a layout that perfectly suits your needs. Its location offers both privacy and excellent access to neighboring communities. Whether you are looking to build a family home or explore development opportunities, this land provides a rare chance to create something special.

ΤΥΠΟΣ	Development Land
ΟΙΚΟΠΕΔΟ	833 m ²
ΤΙΤΛΟΣ ΙΔΙΟΚΤΗΣΙΑΣ	Yes
ΑΡΙΘΜΟΣ ΜΗΤΡΩΟΥ	0/9429



Andreas Kypreos Real Estate Agent

(+357) 97766062

andreas@nchrealestate.com



nchrealestate.com