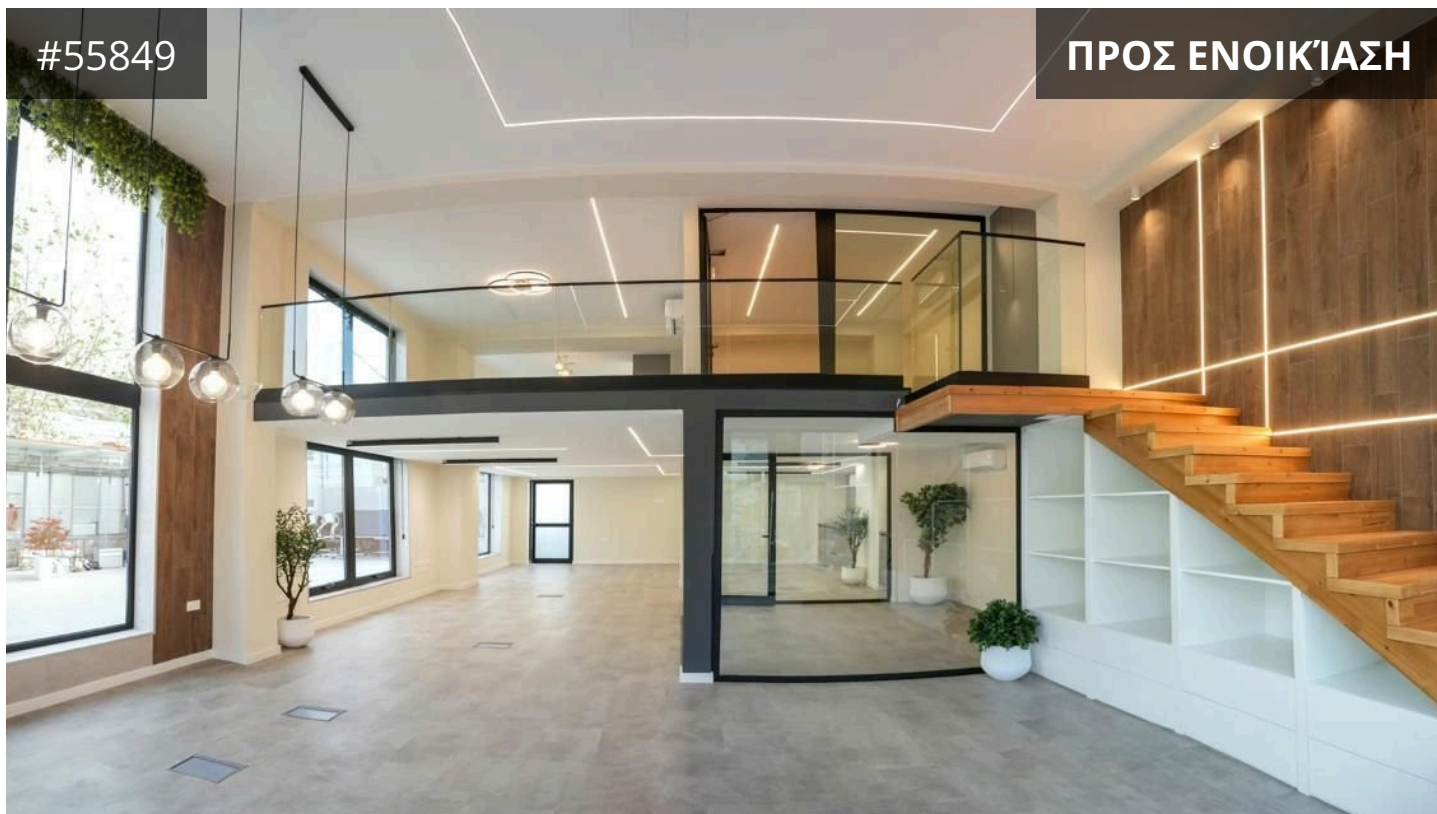


#55849

ΠΡΟΣ ΕΝΟΙΚΪΑΣΗ



Limassol, Limassol - City Center

180 m² Εμβαδόν

Περιγραφή

€7,950 /μήνας

Discover a key-ready, modern office space available for rent in the heart of Limassol - City Center. With an internal area of 180m², this property is designed to provide ample space for your business operations. The layout is open and versatile, making it suitable for a range of office needs, from collaborative workspaces to private offices.

Built in 2025, this office benefits from contemporary architecture and premium finishes. The building is rated A for energy efficiency, ensuring lower running costs and a comfortable working environment year-round. Large windows invite natural light, creating a bright and productive atmosphere.

Limassol - City Center is known for its vibrant business hub, cultural attractions, and excellent amenities. You will be surrounded by cafes, restaurants, banks, and shops, all within walking distance, as well as convenient access to public transport and main road connections.

ΤΥΠΟΣ	Office
ΕΜΒΑΔΏΝ	180 m ²
ΚΑΤΑΣΤΑΣΗ	Key ready
ΈΤΟΣ ΚΑΤΑΣΚΕΥΗΣ	2025



Eszter Andrew
Real Estate Agent

(+357) 97766062

eszter@nchrealestate.com



nchrealestate.com