

#54353

ΠΡΟΣ ΠΩΛΗΣΗ



Limassol, Erimi

150 m² Εμβαδόν | 3 Υπνοδωμάτια | 2 Μπάνια

Περιγραφή

€420,000 +ΦΠΑ

For sale: This stunning off-plan house in the charming area of Erimi offers a modern living experience with a focus on comfort and style. With an internal space of 150 m², this home is designed to meet the needs of today's families. It features three spacious bedrooms and two well-appointed bathrooms, providing ample space for relaxation and privacy.

The project comprises 8 semi-detached residences in a very family friendly and prominent area in Erimi, close to all local amenities, schools and parks.

Erimi is known for its friendly community atmosphere and beautiful surroundings. The area is conveniently located, offering easy access to local amenities, schools, and picturesque parks. Residents can enjoy a blend of tranquility and convenience, making it an ideal place to call home.

Designed with energy efficiency in mind, this property boasts an

ΤΥΠΟΣ	House
ΥΠΝΟΔΩΜΑΤΙΑ	3
ΜΠΑΝΙΑ	2
ΕΜΒΑΔ'ΟΝ	150 m ²
ΟΙΚΟΠΕΔΟ	260 m ²
ΚΑΤΑΣΤΑΣΗ	Under construction



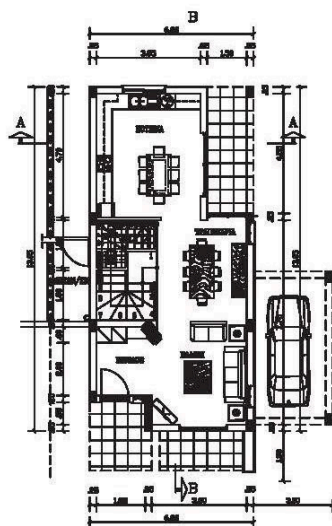
Andreas Kypreos Real Estate Agent

(+357) 97766062

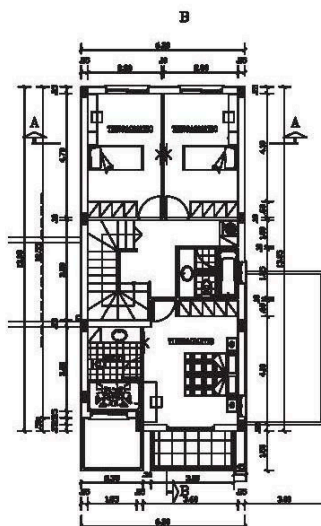
andreas@nchrealestate.com



nchrealestate.com



KATOVH IDOTEBOT
TIHOT B



KATOVH OPOBOT
TIHOT B

