

#53059

ΠΡΟΣ ΕΝΟΙΚΊΑΣΗ



Limassol, Kato Polemidia

113 m² Εμβαδόν

Περιγραφή

€4,580 /μήνας

Modern mezzanine floor office for rent in Kato Polemidia, Limassol

The design of this modern office floor captures a blend of aesthetic appeal, functionality, and environmental consciousness with a roof garden in the common area. Here are some key elements that contribute to its overall excellence:

* Open Spaces: An open floor plan with clustered workstations fosters collaboration while maintaining personal space.

* Natural Light: Large floor-to-ceiling windows maximize natural light, improving ambiance, and productivity, and reducing artificial lighting needs.

* Sustainability: Energy-efficient lighting, eco-friendly materials, and adherence to green building standards ensure environmental

| | |
|-----------------|--------------------|
| ΤΥΠΟΣ | Office |
| ΕΜΒΑΔ'ΟΝ | 113 m ² |
| ΚΑΤΑΣΤΑΣΗ | Under construction |
| ΈΤΟΣ ΚΑΤΑΣΚΕΥΗΣ | 2024 |



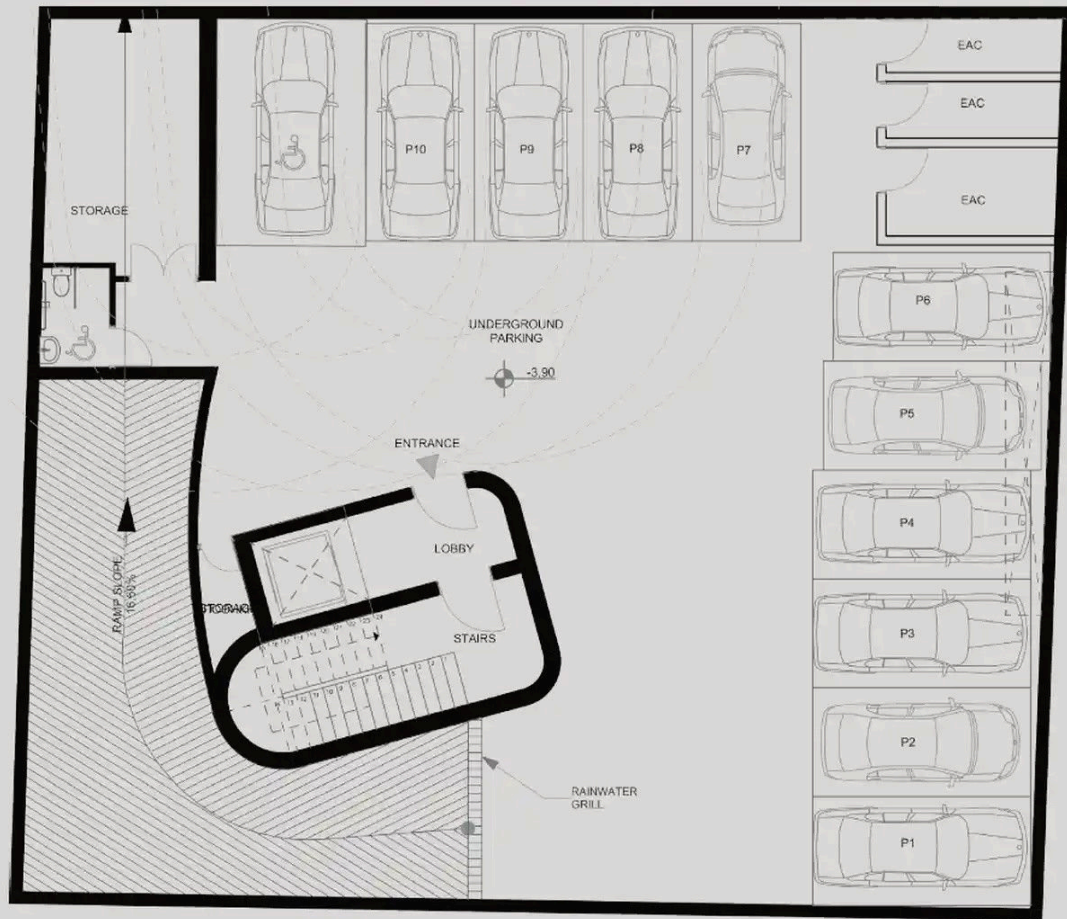
Shaked Cohen Real Estate Agent

(+357) 97766062

shaked@nchrealestate.com



nchrealestate.com



Basement