

#52436

ΠΡΟΣ ΠΩΛΗΣΗ



Limassol, Panthea

800 m² Εμβαδόν | 4 Υπνοδωμάτια | 5 Μπάνια

Περιγραφή

€2,900,000 +ΦΠΑ

The luxurious 4-bedroom 5-bathroom villa sits on a generously sized plot of 1622sq.meters with fascinating views to the mountains and all of Limassol. It is located in a very quiet neighbourhood which consists of modern luxury villas and nature in a prestigious suburb of Limassol, just 10 minutes away from the city and 15 minutes from a variety of beautiful beaches.

The villa includes 3 floors connected with an elegant staircase and lift. The lower floor includes many features and consist of maid's room, 3 car parking spaces, office with access to garden, pet spa, home cinema, cellar, lounge area, sauna and gym with access to the garden and swimming pool.

The open plan ground floor consist of a modern spacious living room, dining area, kitchen, kitchenette, guest toilet and 3 grand bedrooms with an en-suit bathrooms.

ΤΥΠΟΣ	Villa
ΥΠΝΟΔΩΜΑΤΙΑ	4
ΜΠΑΝΙΑ	5
ΕΜΒΑΔ'ΟΝ	800 m ²
ΟΙΚΟΠΕΔΟ	1622 m ²
ΚΑΤΑΣΤΑΣΗ	Off plan



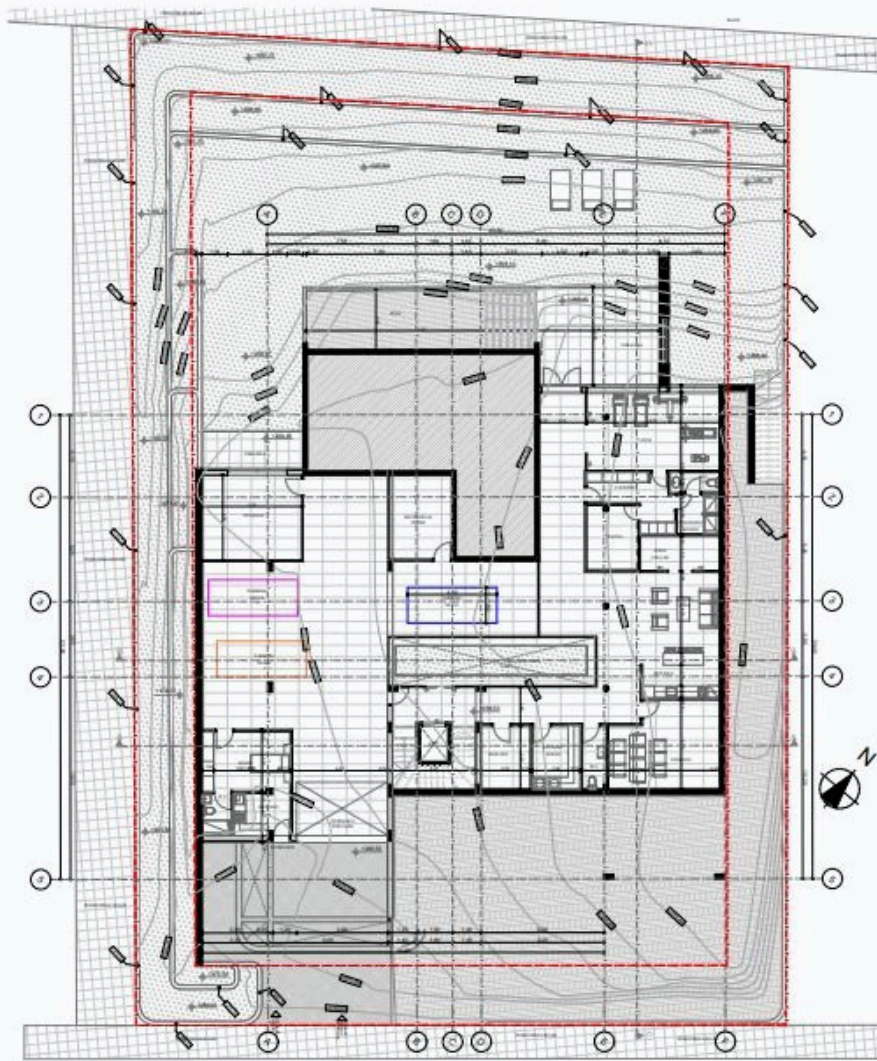
Andreas Kypreos Real Estate Agent

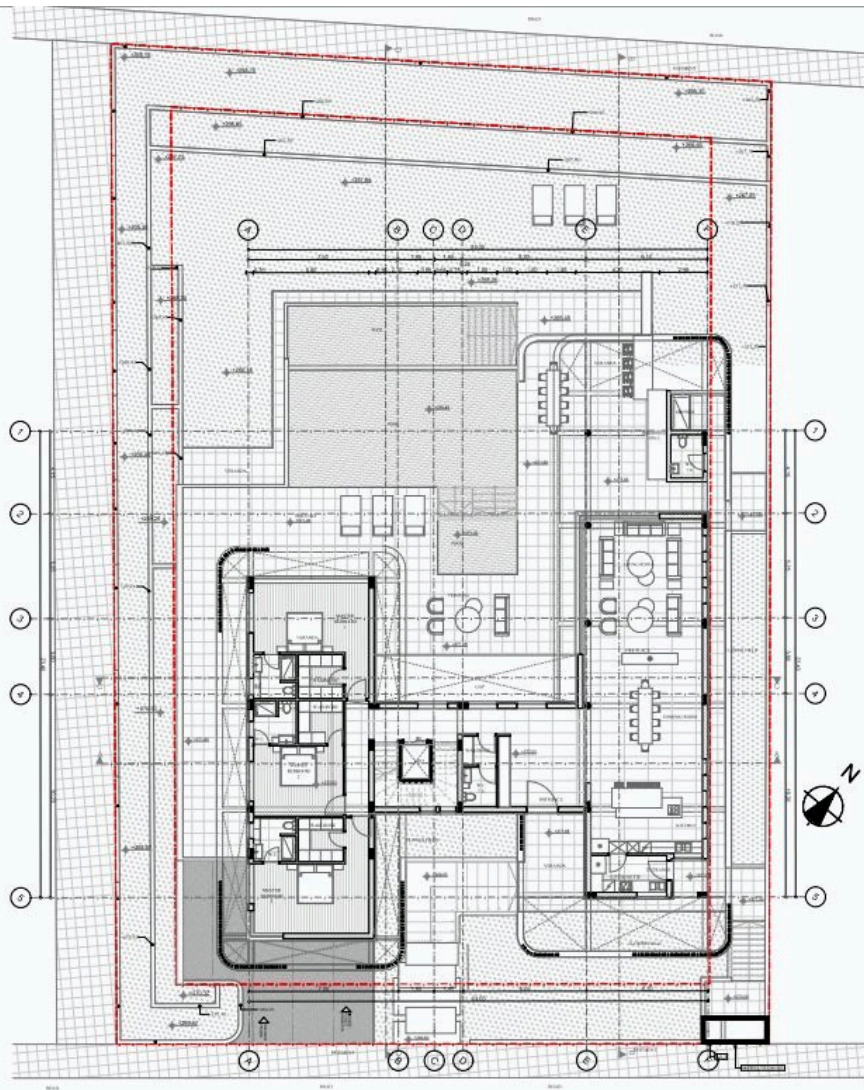
(+357) 97766062

andreas@nchrealestate.com



nchrealestate.com





GROUND FLOOR PLAN
1:200



ROOF GARDEN PLAN
1:200