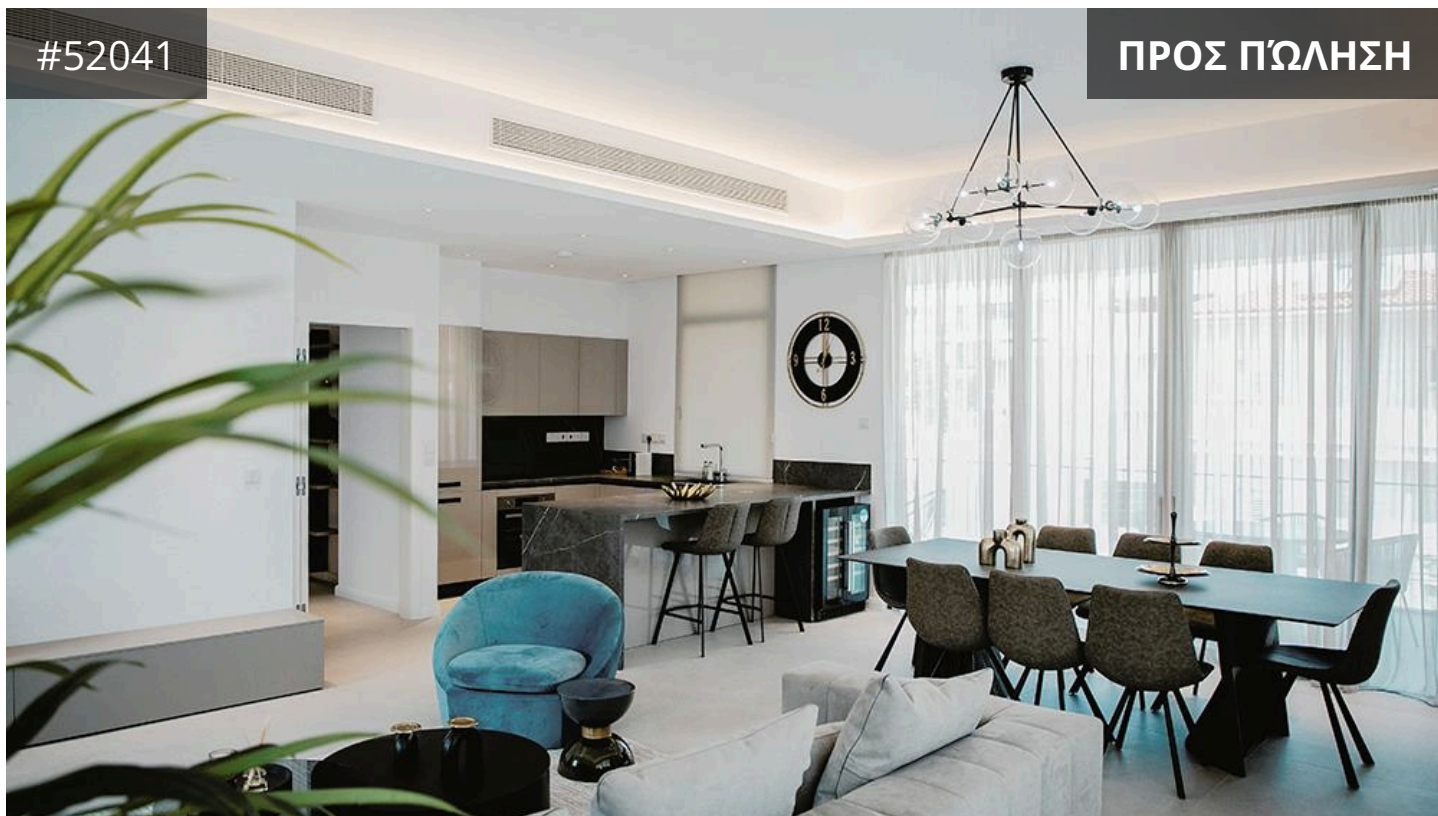


#52041

ΠΡΟΣ ΠΩΛΗΣΗ



Limassol, Limassol - City Center

114 m² Εμβαδόν | 2 Υπνοδωμάτια |



Περιγραφή

€790,000 +ΦΠΑ

This is a collection of ergonomic homes encompassing modern architecture in tune with the environment, displaying exceptional pleasures and comforts of city living.

A reception desk controls access from both the building entrance and the ground level private car park. Remote control gates and a concierge will ensure the safety and security of its residents.

Each apartment is large and features interiors with superior finishes in marble, semi-solid parquet, glass, stone and stainless steel.

All living, dining and most bedrooms enjoy street views, whilst bathrooms and kitchens are located close to the building service area. All apartments are provided with generous living space, and most are designed with an open kitchen, dining and living room areas.

ΤΥΠΟΣ	Apartment
ΥΠΝΟΔΩΜΑΤΙΑ	2
ΕΜΒΑΔ'ΟΝ	114 m ²
ΚΑΤΑΣΤΑΣΗ	Key ready
ΈΤΟΣ ΚΑΤΑΣΚΕΥΗΣ	2024



Shaked Cohen Real Estate Agent

(+357) 97766062

shaked@nchrealestate.com



nchrealestate.com